



Lake Minnetonka Conservation District Newsletter

Message from the Chair



Dear Lake Minnetonka Stakeholders:

Earlier this year the LMCD decided that a newsletter would be a good way to communicate information on topics of general interest to residents on and around the Lake. This is the second such newsletter.

Pictured on the back of this newsletter are the LMCD's staff: Greg Nybeck (Executive Director), Judd Harper (Administrative Technician) and Emily Herman (Administrative Assistant). They do a terrific job of taking care of the responsibilities of the organization!

As stated in the first newsletter, the LMCD works closely with a number of organizations and governmental agencies to carry out its duties in managing Lake Minnetonka. A number of invasive species projects are active which require this kind of collaboration:

• **Milfoil Demonstration Project** - The LMCD has harvested Eurasian Watermilfoil (milfoil) since 1989. Removing milfoil helps clear public navigational lanes, but is not a permanent solution. In 2006, the LMCD partnered with the Lake Minnetonka Association (LMA), the MN DNR, and the Army Corps of Engineers on a special project to test the effectiveness of herbicide treatments on milfoil. Three test sites (portions of Phelps, Carmans, and Grays Bays) were identified and treated in the spring. Initial reactions to the treatments were positive, and a broader analysis of the success of the program will be available later this year.

We will not know the full level of success for the project until next year, when we can see if the milfoil returns, does not return, or is replaced by another invasive species such as curly-leaf pondweed. We will keep you informed (Further details of this project are on page 3).

• **Public Access Inspection Program** - In an attempt to prevent further spread of invasive species (especially zebra mussels), and to improve public education in invasive species prevention, the LMCD entered into an agreement with the MN DNR in 2002. Under this agreement, boat inspections have been conducted at four major public launch ramps on summer weekends and holidays. This year our summer workforce allocated over 2,000 hours to the program.

• **Video Inspection Project** - Environmental Sentry Protection (ESP) developed a "system" that monitors and records boat launching activity using a video camera, computers, and the internet. Inspecting such activities is important because the exotic species "zebra mussel" can be transported from an infested lake to our Lake attached to aquatic plants that can be hanging off of boats and trailers that are being launched. It is against State law to transport exotic species in this manner. The LMCD Board supported the piloting of this system and ESP then installed video cameras at both the Grays Bay and Spring Park public launch ramps. Preliminary results have shown that the public is in favor of such a program and that people behave in a more positive manner when they know their activities are being monitored. A year-end Report on the project has been received, and is available, at the LMCD office.

• **Future Planning** - The LMCD has partnered with the Lake Minnetonka Association (LMA) to work with the MN DNR to explore ways that invasive species might be managed or prevented. We are especially concerned about zebra mussels getting to the Lake. Several meetings have been held to explore creative new ideas, some of which will require changes to State legislation. A meeting with local State legislators is being scheduled and we will keep you informed.

I hope you had a safe and enjoyable boating season. For those of you who take advantage of the Lake in the winter, we hope you enjoy those activities as well. Please feel free to contact the LMCD office if you have any questions or comments.

Tom Skramstad (Chair)

In This Issue

| | |
|------------------------------------|---|
| Message from the Chair | 1 |
| Updated LMCD | |
| De-icing Regulations. | 2 |
| LMCD Winter Rules | 2 |
| Update on 2006 Milfoil Demo . . . | 3 |
| MN DNR Winter Ice Safety Tip . . . | 4 |
| Meetings/Calendar Dates. | 4 |
| Staff Picture | 4 |

Updated LMCD De-icing Regulations

The LMCD adopted its original regulations pertaining to de-icing on Lake Minnetonka in the 1970's. On a number of occasions, the LMCD has updated these regulations, with the most recent occasion taking place in November of 2006. The primary reason why the LMCD updated these regulations was to improve safety for both the general public and residents in the immediate area of a de-icing site.

Detailed below is a summary of the key elements of the updated regulations:

- **WHAT IS DE-ICING:** De-icing involves the use of equipment to circulate water in the proximity of a dock to prevent ice formation that may cause damage to the dock during the winter.
- **PERMITTING REQUIREMENTS:** In order to operate de-icing equipment on Lake Minnetonka, a person needs to secure a license from the LMCD. However, a license is not required to operate de-icing equipment after March 15th.
- **WHO CAN DE-ICE:** Eligible facilities that licenses may be issued for by the LMCD include: 1) commercial docks, 2) dock facilities that were issued de-icing licenses for the winters of 2002/2003, 2003/2004, or 2004/2005, and 3) permanent docks initially issued permanent dock permits between August 17, 2003 and August 10, 2005.
- **SAFETY REQUIREMENTS:** Some of the safety requirements for licensed facilities include: 1) the area to be

de-iced must be fully enclosed, including the shoreline, by a snow fence 4' in height, 2) "Thin Ice" signs (a minimum of 6) are required for each 50' of fencing, 3) de-icing and fencing must be contained within the Authorized De-icing Area for each site (within the extended side site lines and less than 100' beyond the end of the dock structure), and 4) the entire de-icing facility, including fencing, must be adequately lighted to protect the public. For facilities that de-ice after March 15th without a license, you are required to install "Thin Ice" signs every 50' along the affected shoreline.

LMCD staff inspects all licensed de-icing facilities each winter. Last year, the LMCD licensed 30 de-icing facilities on Lake Minnetonka. The LMCD will probably issue a similar number of de-icing licenses this winter. Please feel free to contact the LMCD office if you have questions on whether a site is licensed or if you believe a site does not comply with LMCD de-icing regulations.



LMCD Winter Rules

Some of the LMCD winter rules on Lake Minnetonka are more restrictive than the State of Minnesota's rules. One example of a more restrictive winter rule includes slower speed limits for all motorized vehicles (snowmobiles, ATV's, cars, etc.). It is the responsibility of the operator to understand and comply with all Lake Minnetonka winter rules. Signage that summarizes Lake Minnetonka winter rules was updated by the LMCD this past year, which are installed at most major winter public accesses. To the left is a detailed copy of this sign.

A full copy of Lake Minnetonka winter rules can be obtained at the LMCD office or at www.lmcd.org. If you would like more information on the State of Minnesota's rules, please visit the MN DNR website at www.dnr.state.mn.us.

2006 Milfoil Demonstration Project Update

This past summer, the LMCD partnered with the MN DNR and the Lake Minnetonka Association (LMA) to conduct a demonstration project regarding Eurasian Watermilfoil (milfoil). One of the primary goals of this project was to determine the effectiveness of the use of herbicide treatments as an adjunct to the LMCD's Milfoil Harvesting Program.

This project was designed as a "public/private partnership" between the LMCD and the LMA. The LMCD coordinated the herbicide treatment of selected "Public Treatment Areas" on Phelps, Carmans, and Grays Bay. In the meantime, the LMA coordinated the "Private Treatment Areas" with homeowners that abutted the "Public Treatment Areas" within 150 feet from the shore.

The three "Public Treatment Areas" in 2006 included:

- Site 1- A 6.3 acre site in the northwest end of Phelps Bay was treated in early June with the herbicide tricopyr.
- Site 2- A 15.2 acre site in the north end of Carmans Bay was treated in early May with a combination of the herbicides 2, 4-D and endothall. There were two small untreated reference sites established nearby for evaluation purposes.
- Site 3- A 11.3 acre site in the east end of Grays Bay was treated in early June with the herbicide 2,4-D.

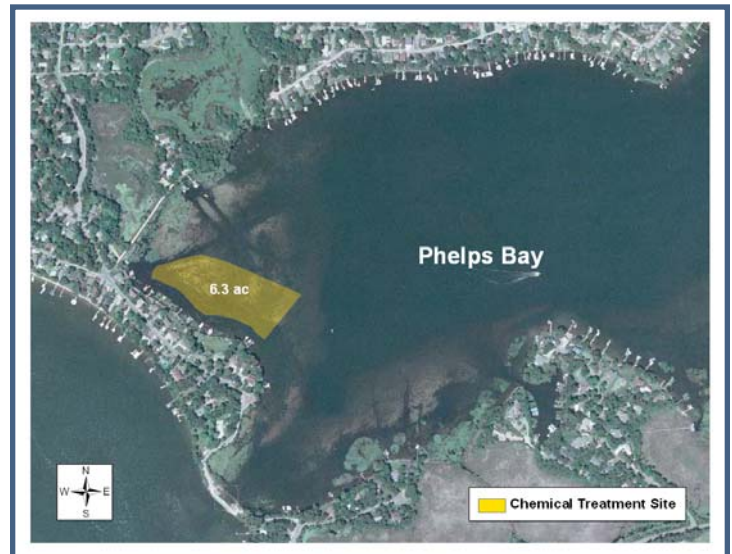
The LMCD conducted no milfoil harvesting at the sites referenced above. Further specifics of these "Public Treatment Areas" are detailed on the three schematic drawings to your right.

To evaluate the success of this project, the Army Corps of Engineers and the MN DNR conducted fieldwork at these three sites prior to the herbicide treatments, in July, and in August. Preliminary field analysis has been conducted for:

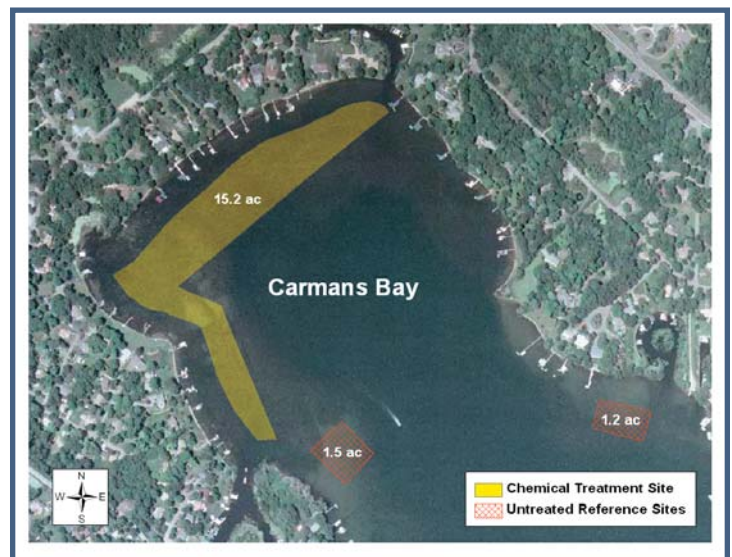
1) plant density of milfoil, curly-leaf pondweed, and native species, 2) percent occurrence of milfoil, curly-leaf pondweed, and native species, and 3) the number of native species present per sample point. The Army Corps of Engineers, working with the MN DNR, is currently conducting the final analysis of this fieldwork. Based on this analysis, a final Report is anticipated sometime in December.

The LMCD funded its part of this project, slightly over \$14,000, through "Save the Lake" funds. "Save the Lake" was created over 30 years ago to enhance and protect the beauty and recreational qualities of Lake Minnetonka. If you are interested in making a tax deductible donation to "Save the Lake", or would like to learn more about this fund, please feel free to contact the LMCD office.

Your questions and comments on this program are welcomed and encouraged. For questions and comments on the "Public Treatment Areas", please contact LMCD Executive Director Greg Nybeck. For questions and comments on the "Private Treatment Areas", please contact LMA Executive Director Dick Osgood at (952) 470-4449 or at dickosgood@usinternet.com.



Site 1



Site 2



Site 3

Ice Safety Tips



When using Lake Minnetonka during the winter months, there is one thing you need to keep in mind. **THERE IS NO SUCH THING AS 100 PERCENT SAFE ICE ON LAKE MINNETONKA!** The MN DNR has established the minimum ice thickness standards detailed herein for the State of Minnesota. Those

that use Lake Minnetonka during the winter need to keep in mind that these standards are merely guidelines for new, clear, solid ice. Many factors other than thickness can cause ice to be unsafe.

For more information on ice safety tips, please visit the MN DNR website at www.dnr.state.mn.us



LMCD Staff Photo:
(left to right) Greg Nybeck (Executive Director), Emily Herman (Administrative Assistant), Judd Harper (Administrative Technician).

Meetings & Calendar Dates

LMCD Board Meetings are scheduled for the second and fourth Wednesdays of each month at Wayzata City Hall, 600 Rice Street, at 7:00 p.m. The following is a list of upcoming meetings and events; subject to change:

| | |
|-------------------|--------------------------------|
| December 8, 2006 | EWM/Exotics Task Force Meeting |
| December 13, 2006 | LMCD Board Meeting |
| January 10, 2007 | LMCD Board Meeting |
| January 24, 2007 | LMCD Board Meeting |
| February 9, 2007 | EWM/Exotics Task Force Meeting |
| February 14, 2007 | LMCD Board Meeting |
| February 28, 2007 | LMCD Board Meeting |
| March 14, 2007 | LMCD Board Meeting |
| March 28, 2007 | LMCD Board Meeting |

LMCD Board Meetings can be viewed at: 1) Mediacom cable (cable channel 20) each Thursday evening at 7:30 p.m., or 2) at www.lmcc@lmcc-tv.org.

EWM/Exotics Task Force Meetings are conducted in the LMCD office @ 8:30 a.m.

18338 MINNETONKA BLVD.
DEEPHAVEN, MN 55391
Phone: 952.745.0789 Fax: 952.745.9085
Monday-Friday 8 AM to 4:30 PM
www.lmcd.org
BOARD MEMBERS:
Tom Skramstad (Chair),
Shorewood
Katy Van Herke (Vice Chair),
Minnnetonka
Paul Knudsen (Treasurer),
Minnnetonka
Tom Seunhens (Secretary),
Minnnetonka Beach
Gene Altstatt, Greenwood
Doug Babcock, Tonka Bay
John Berns, Wayzata
David Gross, Deephaven
Leigh Harrod, Excelsior
Steve Johnson, Mound
Andrew McDermott, Orono
Pete Nelson, Victoria
Tom Scanlon, Spring Park
Herb Suerth, Woodland
Greg Nybeck, Executive Director
gnybbeck@lmcd.org
Printing and ink donated by Creek Litho, Inc.
Design & layout of newsletter donated by Kathleen Kinney.

